

# QDec Measurement Summary

## Measurement Information

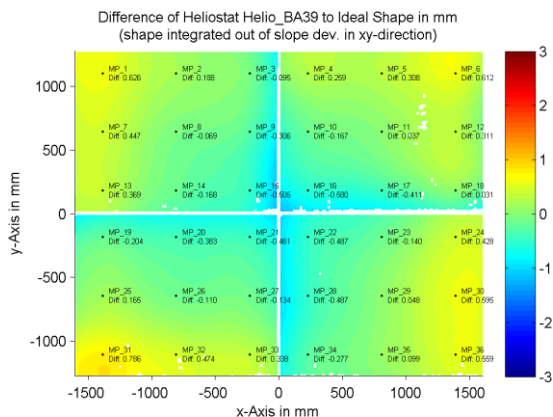
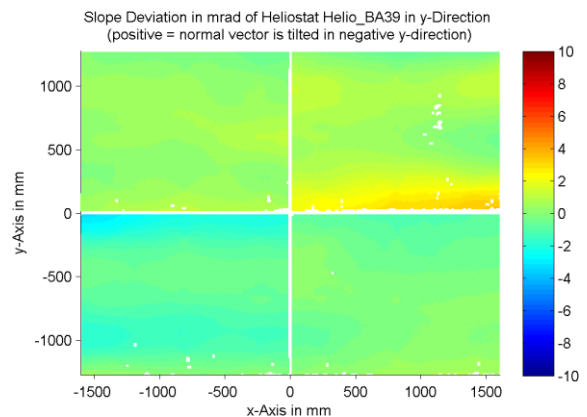
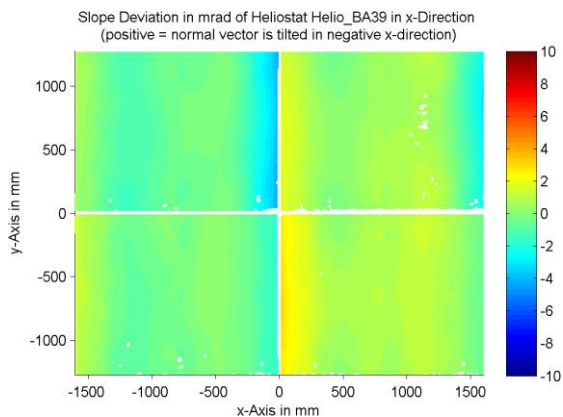
<b>Panel:</b>	Helio_BA39	<b>Meas. Date:</b>	25.04.2015 - 00:13:43
<b>Paneltype:</b>	Heliostat	<b>Operator:</b>	DLR Expert User
<b>Setup:</b>	MeasPosition	<b>Comment:</b>	
<b>Negl. Rim:</b>	0 mm	<b>System:</b>	QDec_2014-101
<b>Orientation:</b>	Mean Slope to Zero	<b>Location:</b>	Jülich

## Result Overview

**Quality:** no specifications      Evaluated Surface: 99.6 %

Value	Measurement	Specification	Description
SDx	1.03 mrad		Slope deviation in x-direction (rms)
SDy	0.90 mrad		Slope deviation in y-direction (rms)
ICAP_D1	96.79 %		Intercept on aperture

## Result Graphs



## Measurement System Information

Config File:	130929_Helio	QDec Version:	3.1.3680 (14.05.2014)
Evaluation Date:	30.06.2016 - 16:41:01		
Last Calibration:	14.08.2014		
PDF Filename:	...\MeasData_150424\Results\Helio\Helio_BA39\Helio_BA39_Rim0_Result_160630164101.pdf		