

QDec Measurement Summary

Measurement Information

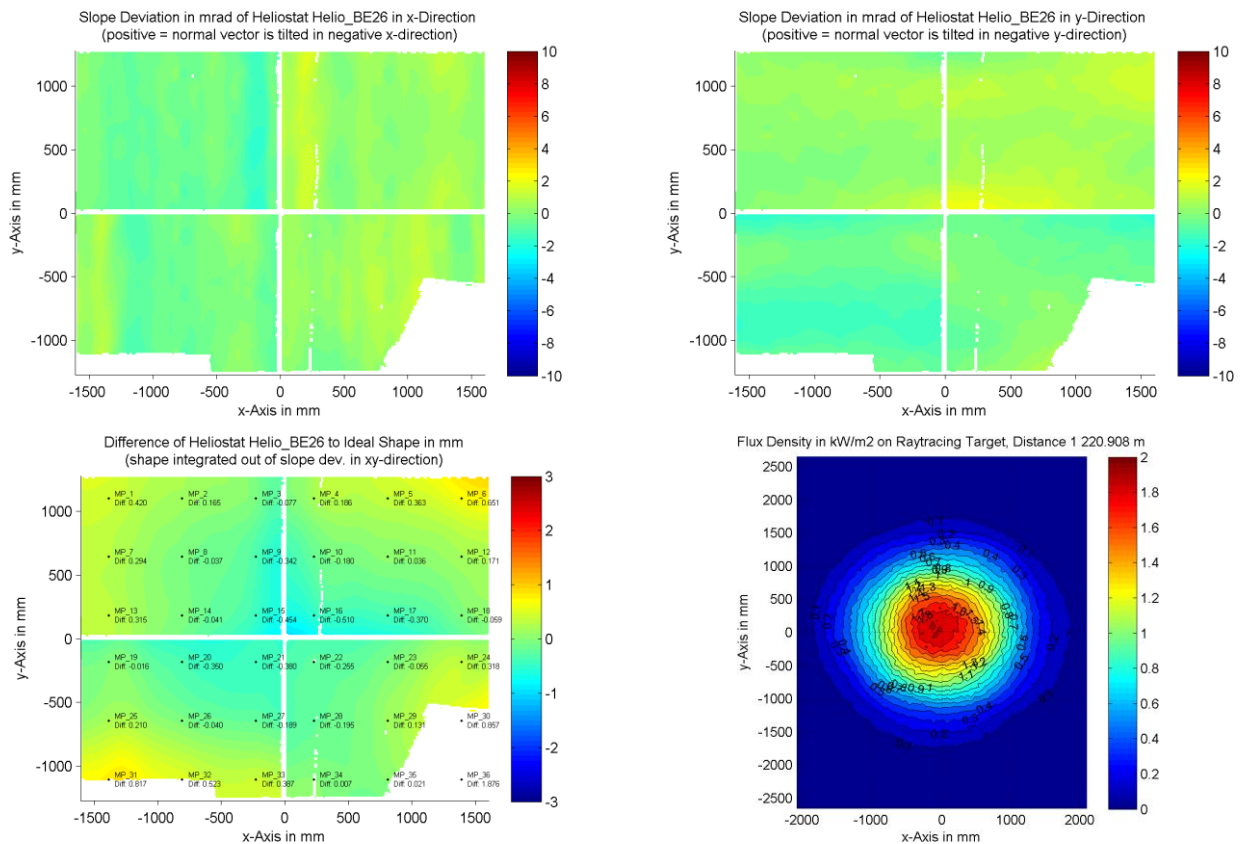
Panel:	Helio_BE26	Meas. Date:	10.05.2016 - 23:00:41
Paneltype:	Heliostat	Operator:	DLR Expert User
Setup:	MeasPosition	Comment:	
Negl. Rim:	0 mm	System:	QDec_2014-101
Orientation:	Mean Slope to Zero	Location:	Jülich

Result Overview

Quality: no specifications Evaluated Surface: 90.9 %

Value	Measurement	Specification	Description
SDx	0.61 mrad		Slope deviation in x-direction (rms)
SDy	0.75 mrad		Slope deviation in y-direction (rms)
ICAP_D1	97.63 %		Intercept on aperture

Result Graphs



Measurement System Information

Config File:	130929_Helio	QDec Version:	3.1.3680 (14.05.2014)
Evaluation Date:	12.05.2016 - 10:36:03		
Last Calibration:	14.08.2014		
PDF Filename:	...\MeasData_160510\Results\Helio\Helio_BE26\Helio_BE26_Rim0_Result_160512103603.pdf		