

QDec Measurement Summary

Measurement Information

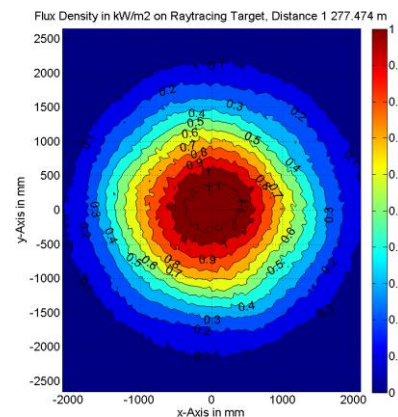
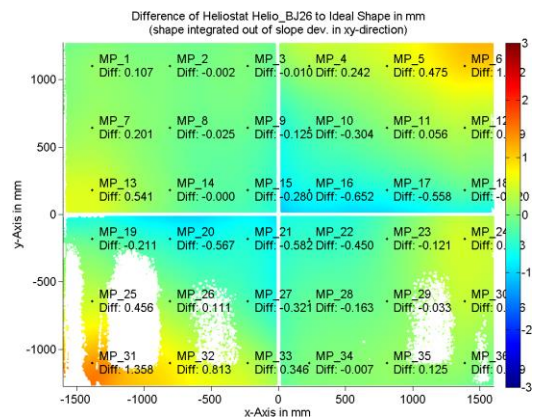
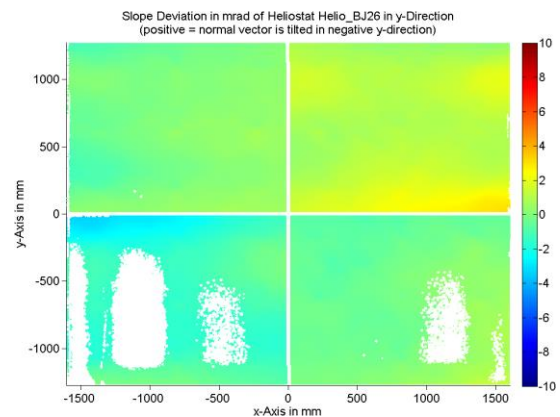
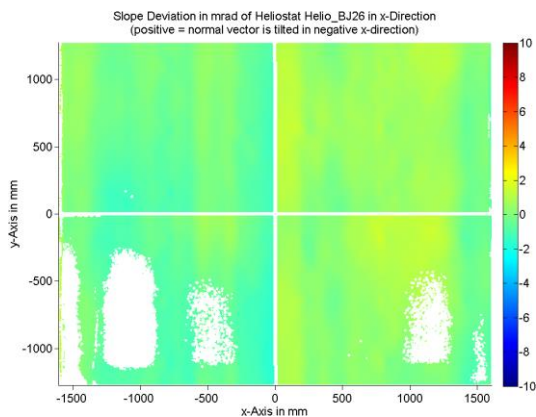
Panel:	Helio_BJ26	Meas. Date:	27.02.2019 - 18:38:29
Paneltype:	Heliostat	Operator:	DLR
Setup:	MeasPosition	Comment:	
Negl. Rim:	0 mm	System:	QDec_2014-101
Orientation:	Mean Slope to Zero	Location:	Jülich

Result Overview

Quality: no specifications Evaluated Surface: 92.2 %

Value	Measurement	Specification	Description
SDx	0.66 mrad		Slope deviation in x-direction (rms)
SDy	1.03 mrad		Slope deviation in y-direction (rms)
ICAP_D1	95.36 %		Intercept on aperture

Result Graphs



Measurement System Information

Config File:	130929_Helio	QDec Version:	3.1.4555 (13.03.2017)
Evaluation Date:	27.02.2019 - 19:46:02		
Last Calibration:	14.08.2014		
PDF Filename:	...\MeasData_190227\Results\Helio\Helio_BJ26\Helio_BJ26_Rim0_Result_190227194602.pdf		