

QDec Measurement Summary

Measurement Information

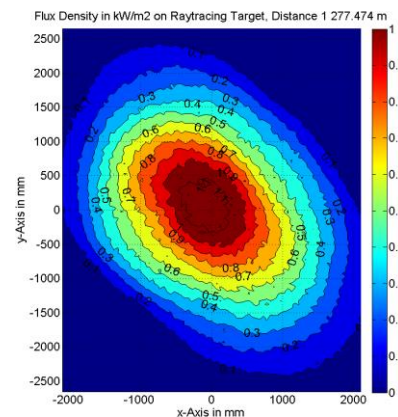
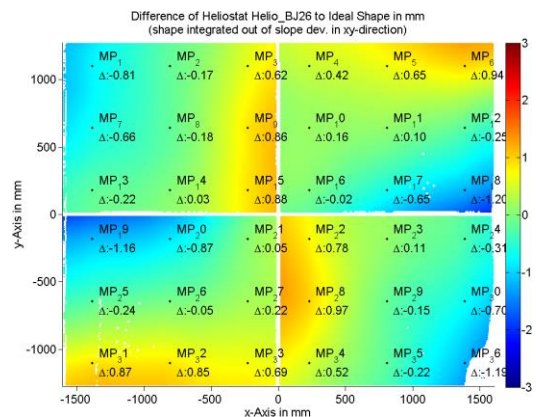
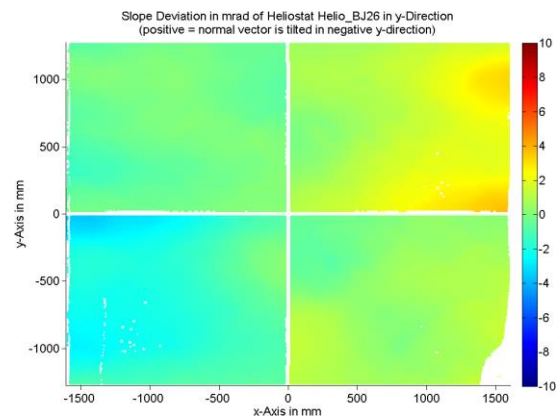
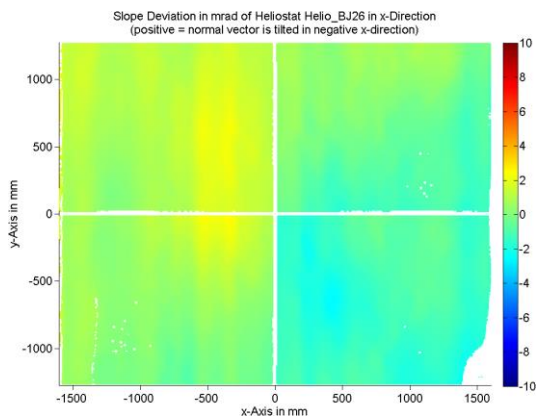
Panel:	Helio_BJ26	Meas. Date:	14.11.2019 - 20:07:00
Paneltype:	Heliostat	Operator:	DLR
Setup:	MeasPosition	Comment:	
Negl. Rim:	0 mm	System:	QDec_2014-101
Orientation:	Mean Slope to Zero	Location:	Jülich

Result Overview

Quality: no specifications Evaluated Surface: 98.6 %

Value	Measurement	Specification	Description
SDx	1.09 mrad		Slope deviation in x-direction (rms)
SDy	1.30 mrad		Slope deviation in y-direction (rms)
ICAP_D1	94.74 %		Intercept on aperture

Result Graphs



Measurement System Information

Config File:	130929_Helio	QDec Version:	3.1.4859 (31.10.2018)
Evaluation Date:	15.11.2019 - 10:07:31		
Last Calibration:	14.08.2014		
PDF Filename:	T:\191114_SKT_\Results\Helio\Helio_BJ26\Helio_BJ26_Rim0_Result_191115100731.pdf		