

QDec Measurement Summary

Measurement Information

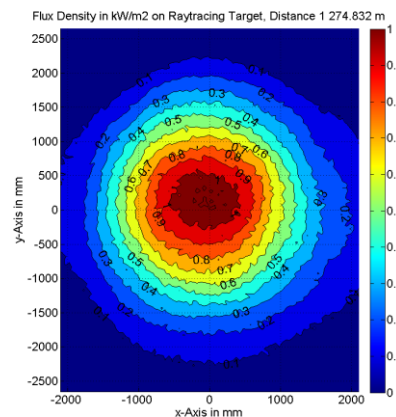
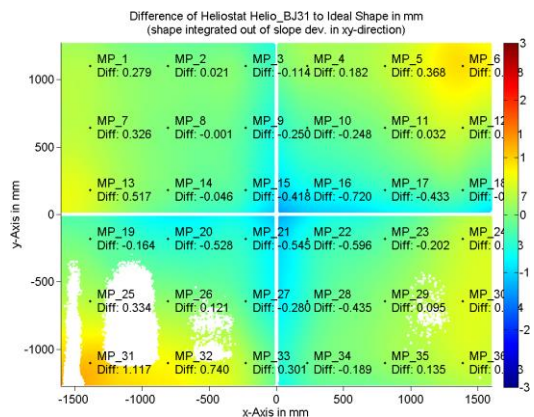
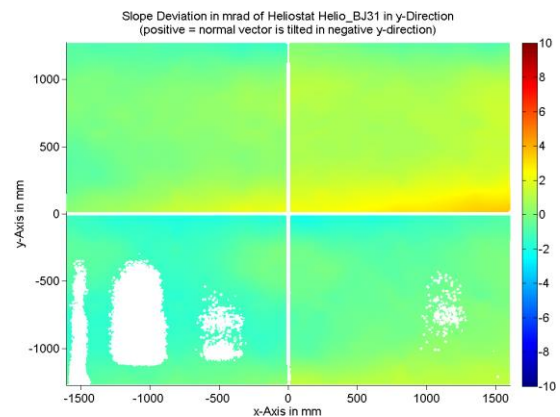
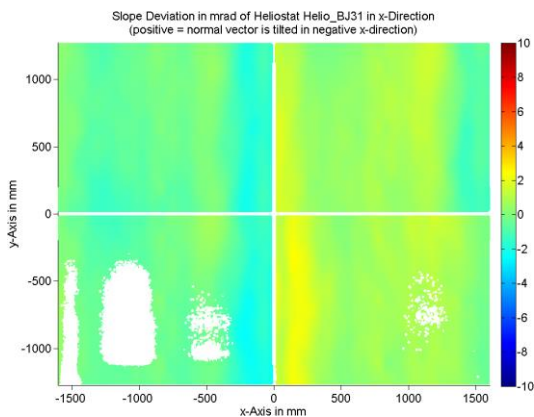
Panel:	Helio_BJ31	Meas. Date:	27.02.2019 - 18:46:27
Paneltype:	Heliostat	Operator:	DLR
Setup:	MeasPosition	Comment:	
Negl. Rim:	0 mm	System:	QDec_2014-101
Orientation:	Mean Slope to Zero	Location:	Jülich

Result Overview

Quality: no specifications Evaluated Surface: 94.9 %

Value	Measurement	Specification	Description
SDx	0.94 mrad		Slope deviation in x-direction (rms)
SDy	1.00 mrad		Slope deviation in y-direction (rms)
ICAP_D1	92.71 %		Intercept on aperture

Result Graphs



Measurement System Information

Config File:	130929_Helio	QDec Version:	3.1.4555 (13.03.2017)
Evaluation Date:	27.02.2019 - 19:50:42		
Last Calibration:	14.08.2014		
PDF Filename:	...\MeasData_190227\Results\Helio\Helio_BJ31\Helio_BJ31_Rim0_Result_190227195042.pdf		